



Simon|52



simon

Barcelona • Madrid • Belo Horizonte • Sao Paulo • Brussels • Buenos Aires •
Casablanca • Lima • Lisbon • Mexico D. F. • Moscow • New Delhi • Turin • Warsaw •
Oslo • Bucharest • Shanghai • Hanoi • Jakarta

SIMON, S.A.

Tel. +34 902 109100
Web. www.simonelectric.com

Vietnam Office of Simon Electric

Tel. +84 24 3222750
Web. www.simon-apac.com

Simon Electric (China)

Tel. +86 21 3855 5222
Web. <https://www.simon.com.cn/>

Simon Electric (APAC)

Web. www.simon-apac.com
E-mail. info@simon-apac.com

PT Simon Elektrik Indonesia

Tel. +62 21 52960373
Web. www.simonelektrik.co.id

July 2020 Printed

Long-lasting
Distinguished
Design

simon

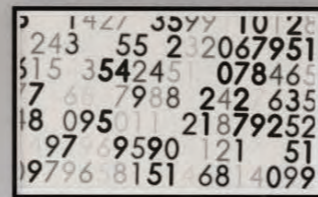


52 Series

Established in 1916, Simon is an international company with its headquarters in Barcelona. Simon is specialized in the electrical equipment industry and our main focus is in: switches & sockets, lighting and control systems.

Following the company aim for more than 100 years, our team redesigned the 52 series giving a new good-looking style with a new fresh and modern frame.

With this new modern style of 52 series, we can suit all of your project design needs and make it even more outstanding.







We do not hide the Simon 52 series in the wall, but make it stand out even more.

Simon|52

Cool design, detail of color



Simon 52 series uses black and white as a base, and combines it with a detail of color in the edge. This design provides the best solution for your project needs and make your space unique.

Start your journey by choosing white or black base, then add a little more...



White base
Matt gold



White base
Silver



White base
Brown



Black base
Matt gold



Black base
Silver

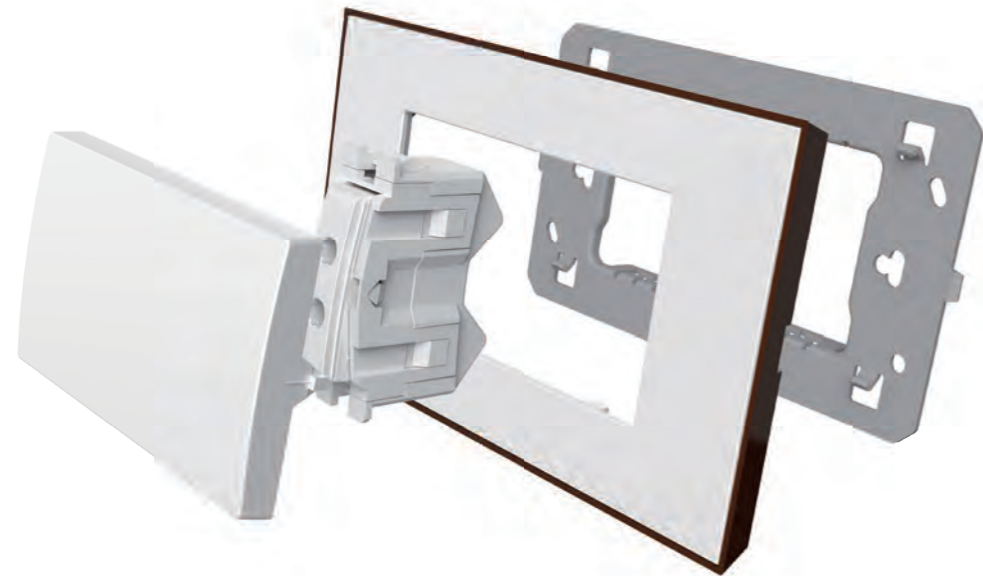


Black base
Champagne



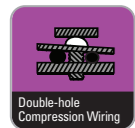
Simon|52

Safer, durable



Taking advantage from the Simon R&D knowledge, we present 52 series, safe and durable.

Technical data & Materials feature



Can adapt to both, stranded and solid wires (Max. section 6mm²). Enlarge the contact area of cable, reliable, enough ampacity, clamping screw never will fail.



Complete PC materials for all insulating parts, from Bayer, including plates and back housing. Flame and heat resistance. Uniform color, never fade, Anti-UV. Eco friendly.



Simon|52

Internal metal pieces



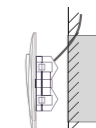
Silver alloy contact. Good performance of conductivity and efficiency, prevent the abrasion, anti-oxidant, prevention of electric arc.

The large section area gives excellent conductivity avoiding danger and overheats.

Structure features (user-friendly)



Resistant steel - based board and stainless insulating coating base board. It is anti-corrosive with a strong base that allows better integration between the switch and the mounting box.



Easy to do the wiring in a limited space. It reduces the installation time. 45° leaning connection, easy to do the wiring in a limited space. It reduces the installation time.

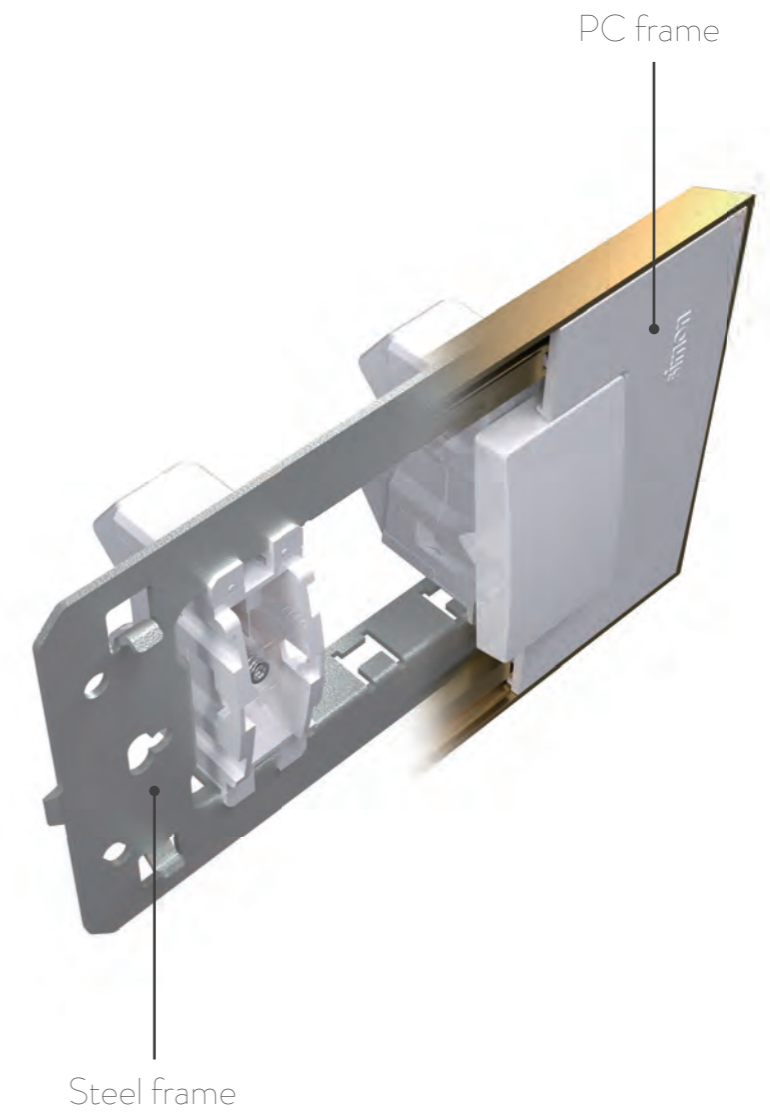
Safety



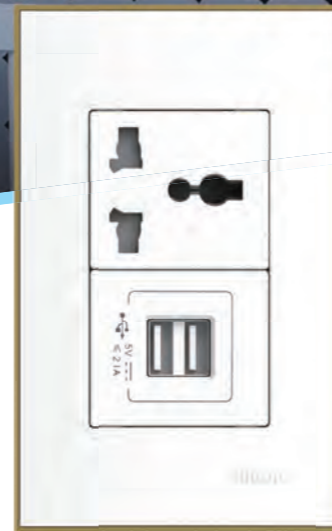
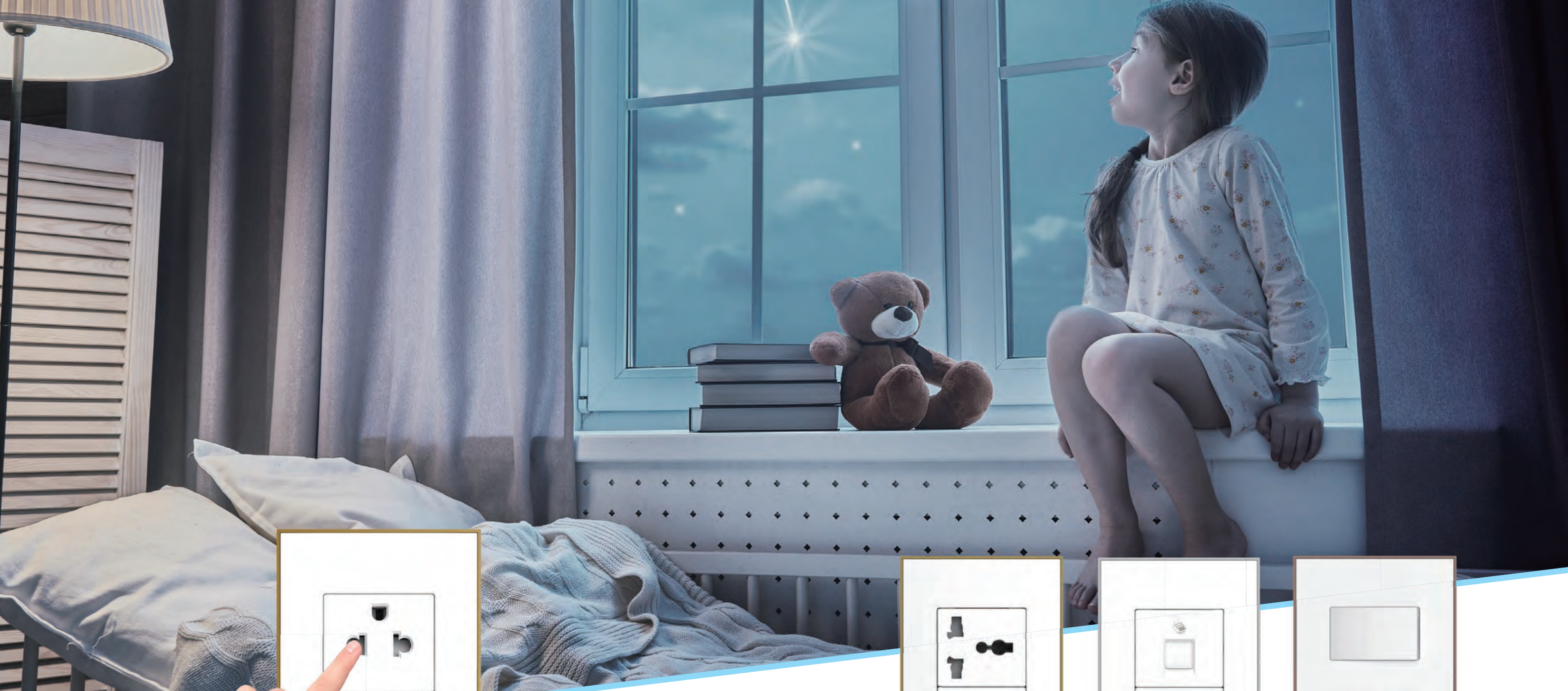
Self-lock function, reject any plugs by abnormal objects, protect safety of family members. Compact: plug in/out smoothly



Unique U type Spring Toggle inside, fast off only in 0.003s! 50% shorter than normal switch, which help to decrease electric arc, and enlarge the product lifetime.



Simon 52 series use the best quality of PC material for the front frame, and an insulated steel metal for the back frame. Following this way we achieve the best combination between design and product strength.



52 Series offer you a variety of solutions, with free combination of multiple modules to satisfy your project needs.



Modules and frames are separated.

COLOUR ▶ White -26 Black

DESCRIPTION	CODE	DESCRIPTION	CODE
Switches Modules			
1 Way Switch Module (S) (16AX 250V)	N31B N31B-26	2 Pin Socket Module (M) (10A 250V)	N72 N72-26
1 Way Switch with LED Indicator Module (S) (16AX 250V)	N33B N33B-26	Multi-standard Socket Module (M) (13A 250V)	N801 N801-26
2 Way Switch Module (S) (16AX 250V)	N32B N32B-26	With Earth Contact (M) (16A 250V)	N82 N82-26
1 Way Switch Module (M) (16AX 250V)	N21B N21B-26	Air conditioner Socket Module (M) (15A 250V)	N855 N855-26
1 Way Switch with LED Indicator Module (M) (16AX 250V)	N23B N23B-26	Schuko Socket Module (XL) (16A 250V)	N87 N87-26
2 Way Switch Module (M) (16AX 250V)	N22B N22B-26	Tel, TV and Data Outlets	
Intermediate Switch Module (M) (16AX 250V)	N26 N26-26	TV Outlet Module (S)	N513 N513-26
1 Way Switch Module (XL) (16AX 250V)	N11B N11B-26	TV Outlet F type connector (S)	N511 N511-26
1 Way Switch with LED Indicator Module (XL) (16AX 250V)	N13B N13B-26	TV Outlet Module (M)	N51 N51-26
2 Way Switch Module (XL) (16AX 250V)	N12B N12B-26	Telephone outlet Module (RJ11) (S)	N522 N522-26
2 gang 2 Way Switch Module (M) (16AX 250V)	N44B N44B-26	Telephone Outlet Module (RJ11) (M)	N521 N521-26
Sockets			
2 Pin socket Module (S) (10A 250V)	N721 N721-26	Data outlet connector (RJ45) (Cat.5e) (S)	N552 N552-26
		Data outlet (RJ45) (Cat.6) (M)	N551S6 N551S6-26

Modules and frames are separated.

COLOUR ▶ White -26 Black

DESCRIPTION	CODE	DESCRIPTION	CODE
Shielded TV outlet F type connector (M)	N57 N57-26	Frames	
Data outlet connector (RJ45) (Cat.5e) (M)	N551 N551-26	-1 Matt Gold	
Others		-2 Silver	
Blank plate (S)	N03 N03-26	-3 Brown	
Blank plate (M)	N02 N02-26	-4 Matt Gold	
Blank plate (XL)	N04 N04-26	-5 Silver	
400W Dimmer switch for incandescent load (M)	N201 N201-26	-6 Champagne	
200W Fan Speed Control Switch Module (M)	N202 N202-26	120 Frame for 3S Modules	52V120-1 52V120-2 52V120-3 52V120-4 52V120-5 52V120-6
LED Pilot Lamp Module (M)	N60 N60-26	120 Frame for 1M Module	52V121-1 52V121-2 52V121-3 52V121-4 52V121-5 52V121-6
Door Switch Module (S) 16A 250V	N35B N35B-26	120 Frame for 1S Module	52V122-1 52V122-2 52V122-3 52V122-4 52V122-5 52V122-6
Double USB charger 2.4A (M)	NE721 NE721-26	120 Frame for 2S Modules	52V123-1 52V123-2 52V123-3 52V123-4 52V123-5 52V123-6

— **simon** —
LIGHT UP
EMOTIONS

